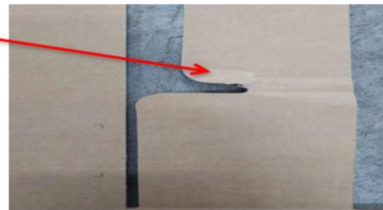
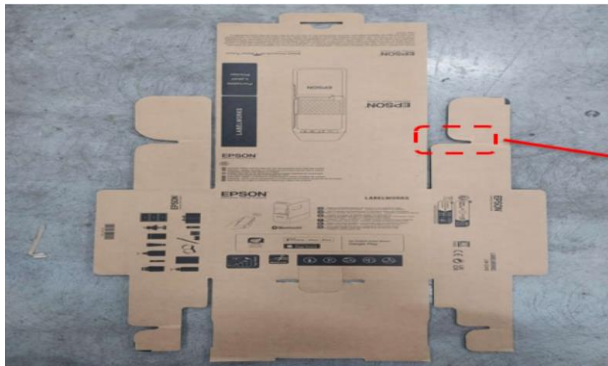


INVESTIGATION REPORT FOR SCRATCH OF 516378500 LIME 2 FB AMERICA CC350

DIRECT CAUSE METHOD (PROCESS)	W1: Tear Off problem at detaching process. W2: The raw materials is hard to detached. W3: Operator at detaching did not follow the correct facing of item during detaching. W4: Operator at detaching are newly trained to the process. W5: Human error.
INDIRECT CAUSE METHOD (PROCESS)	W1: Theres a possibility that the item had an uncut.



PRODUCTION ACTION PLAN

> Re-orientation to all operator regarding tear off issue and proper facing of item during detaching process.